





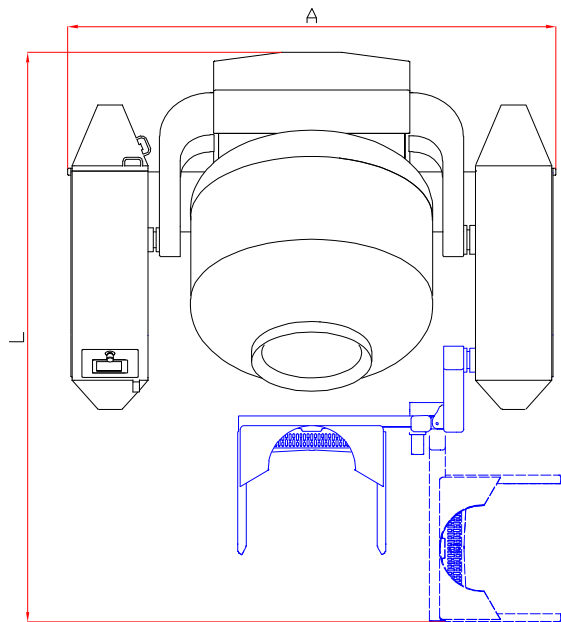
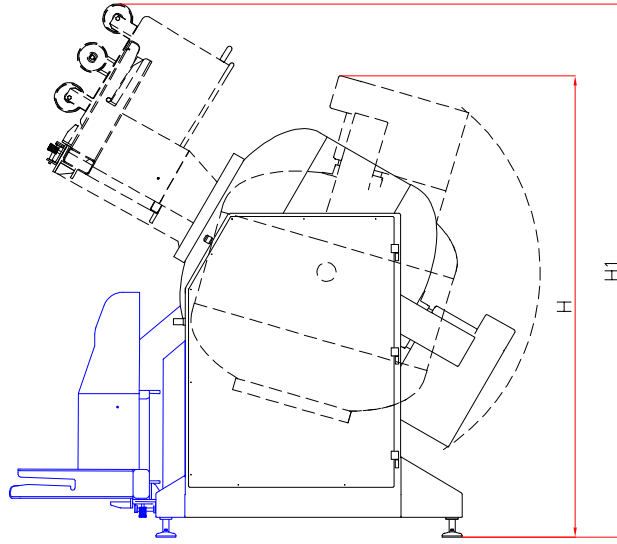


MV SERIES SPECIFICATION

MACHINE TYPE [MV]	300	600	1000
Total capacity [L]	300	600	1000
Max filling [L]	160	380	600
Motor power [kW]	2,3	4,0	7,0
Fuse [A]	16	20	25
Loader option	PZ 3/250	LIFTING ARM	LIFTING ARM
Busch vacuum pump [m ³ /h]	21	40	40
Standard control			
Drum rotation speed [rpm]	0-9	0-9	0-9
Mixer net weight [kg]	160	380	1480
Unloading bin DIN 9797	200L 	200L 	200L 

MODEL OF MACHINES [MV]	300	600	1000
Loader option	o	o	o
PLC and HMI	S	S	S
Smooth variable speed	S	S	S
Temperature sensor	-	-	-
Weighing system	-	-	-
Double jacket max pressure 2.0 Bar	-	-	-

MV SERIES SPECIFICATION



MODEL OF MACHINES [MV]	300	600	1000	600 with lifting arm	1000 with lifting arm
H [cm]	187	190	232	190	232
H1 [cm]	-	-	-	261	269
L [cm]	132	153	180	233	288
A [cm]	158	200	225	216	244